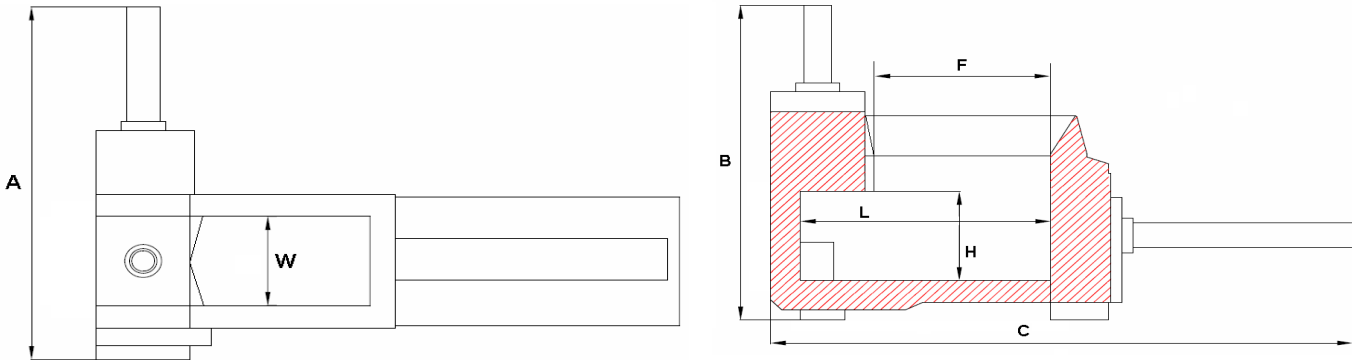


LEOPARD - 3 COMPRESSION BALERS

MODEL	BALE SIZE cm x cm x ...	PRODUCTION tons / hour	BALE WEIGHT kg	CYCLE (DRY) sec	CYLINDER FORCE MAX.			MOTOR kW	WORKING PRESSURE bar	OVERALL DIMENSIONS A x B x C (cm)	PRESS BOX DIMENSIONS W x H x L (cm)	FEEDING OPENING W x F (cm)	MACHINE WEIGHT TON
					1. ton	2. ton	3. ton						
LEOPARD S	30 x 30	5 - 8	90 - 140	55	95	95	145	45	300	450 x 360 x 950	90 x 90 x 230	90 x 175	30
	30 x 40												
	40 x 40												
LEOPARD SC	30 x 30	4,5 - 7	90 - 140	60	95	95	210	45	300	450 x 360 x 950	90 x 90 x 230	90 x 175	34
	30 x 40												
	40 x 40												
LEOPARD F	30 x 30	6 - 9	90 - 140	50	145	145	210	55	300	450 x 360 x 950	90 x 90 x 230	90 x 175	35
	30 x 40												
	40 x 40												
LEOPARD FL	30 x 30	8 - 14	100 - 160	40	145	145	210	2 x 55	300	500 x 375 x 1000	90 x 90 x 260	90 x 205	38
	30 x 40												
	40 x 40												
LEOPARD N	30 x 30	9,5 - 15	90 - 140	30	145	145	210	110	300	460 x 360 x 950	100 x 90 x 230	100 x 175	40
	30 x 40												
	40 x 40												
LEOPARD FS	30 x 30	10 - 18	100 - 160	35	145	145	290	2 x 90	300	450 x 360 x 1000	100 x 90 x 260	100 x 205	45
	30 x 40												
	40 x 40												
LEOPARD FLD	30 x 30	9 - 16	100 - 160	35	145	210	290	2 x 75	300	500 x 375 x 1000	110 x 90 x 260	110 x 205	43
	30 x 40												
	40 x 40												
LEOPARD FLW	30 x 30	14 - 22	180 - 260	35	210	210	290	2 x 75	300	575 x 375 x 1000	150 x 90 x 260	150 x 205	60
	30 x 40												
	40 x 40												
LEOPARD FLW 2-3	30 x 30	16 - 24	200 - 280	35	210	210	290	2 x 75	300	450 x 795 x 910	200 x 90 x 300	200 x 230	65
	30 x 40												
	40 x 40												

Note: These data represent approximate values which are subject to change. Birim Makina has the right to change the data without prior notice. Bale weight and production capacity are calculated for steel scrap and may differ due to material type and filling density in operation.



LEOPARD - 3 RAM BALING PRESS

MODEL	BALE SIZE cm x cm x ...	PRODUCTION CAPACITY ton / hour	BALE WEIGHT kg	CYCLE TIME saniye	CYLINDER COMPRESSION			MOTOR kW	PUMP PRESSURE bar	MACHINE DIMENSIONS A x B x C (cm)	CHARGING BOX SIZE W x H x L (cm)	CHAMBER OPENING W x F (cm)	WEIGHT TON
					1.	2.	3.						
					ton	ton	ton						
LEOPARD S	30 x 30	5 - 8	90 - 140	55	95	95	145	45	300	450 x 360 x 950	90 x 90 x 230	90 x 175	30
	30 x 40												
	40 x 40												
LEOPARD SC	30 x 30	4,5 - 7	90 - 140	60	95	95	210	45	300	450 x 360 x 950	90 x 90 x 230	90 x 175	34
	30 x 40												
	40 x 40												
LEOPARD F	30 x 30	6 - 9	90 - 140	50	145	145	210	55	300	450 x 360 x 950	90 x 90 x 230	90 x 175	35
	30 x 40												
	40 x 40												
LEOPARD FL	30 x 30	8 - 14	100 - 160	40	145	145	210	2 x 55	300	500 x 375 x 1000	90 x 90 x 260	90 x 205	38
	30 x 40												
	40 x 40												
LEOPARD N	30 x 30	9,5 - 15	90 - 140	30	145	145	210	110	300	460 x 360 x 950	100 x 90 x 230	100 x 175	40
	30 x 40												
	40 x 40												
LEOPARD FS	30 x 30	10 - 18	100 - 160	35	145	145	290	2 x 90	300	450 x 360 x 1000	100 x 90 x 260	100 x 205	45
	30 x 40												
	40 x 40												
LEOPARD FLD	30 x 30	9 - 16	100 - 160	35	145	210	290	2 x 75	300	500 x 375 x 1000	110 x 90 x 260	110 x 205	43
	30 x 40												
	40 x 40												
LEOPARD FLW	30 x 30	14 - 22	180 - 260	35	210	210	290	2 x 75	300	575 x 375 x 1000	150 x 90 x 260	150 x 205	60
	30 x 40												
	40 x 40												
LEOPARD FLW 2-3	30 x 30	16 - 24	200 - 280	35	210	210	290	2 x 75	300	450 x 795 x 910	200 x 90 x 300	200 x 230	65
	30 x 40												
	40 x 40												

Not: Tabloda verilen deęerler yol gsterici olup baęlayıcı deęildir. Birim Makina bu deęerleri tek tarafı olarak deęiřtirebilir. Balya aęırlıkları ve kapasite oranları demir-elik malzemeye gre hesaplanmış olup yaklaşık deęerlerdir. Bu deęerler malzemenin ykleme řekli ve cinsine gre deęiřir.

